

D8 CONSULTANTS LTD. COMPANY PROFILE



CONTENTS

- 1 History of D8CL
- 2 Management Philosophy
- 3 D8CL Values
- 4 Markets & Services
- 5 Expertise
- 6 Scope of Services
- 7 Company Overview
- 8 Management Structure
- 9 International Partners

- 10 Experiences/Infrastructure
- 11 Experiences/Buildings
- 12 Experiences/BIM
- 13 List of Staffs
- 14 List of Clients
- 15 List of Partners
- 16 Registration with Multilateral Donor

- 17 Technology Development
- 18 Value Management



D8 Consultants Ltd. (D8CL) was founded as a Sole Proprietorship Engineering Consulting Firm and later was converted into a Private Limited Company under RJSC, Bangladesh – as one of the multidisciplinary engineering consulting firm, D8CL is highly diversified in expertise and specialization. D8CL provides, in the most professional manner, consultancy services for a wide range of disciplines including transportation & infrastructure, water, environment, buildings, energy and digital technology.

To meet the global needs of both public and private clients, **D8 Consultants Ltd. (D8CL)** offers a full range of engineering capabilities, providing integrated solutions ranging from conceptual planning, feasibility study and detailed engineering design to project management.

D8CL maintains strategic collaborations across Southeast Asia, including China, South Korea, India, Singapore, the Philippines, and Nepal, with its regional footprint continuing to expand steadily.

Management Philosophy

Mission

Sustainable Designs, Global Standards

Delivering innovative and sustainable engineering solutions that build resilience, value, and trust.



Vision

Connecting Communities, Inspiring Progress

To be a global leader in innovative and sustainable engineering consultancy, shaping resilient infrastructure that drives progress, connects communities, and inspires future generations.



D8CL VALUES

Integrated Design for Complex Infrastructure

As At **D8 Consultants Ltd. (D8CL)**, our values are deeply rooted in the principle of **Integrated Design for Complex Infrastructure**. We believe that world-class engineering solutions emerge when **innovation, collaboration, and sustainability** are seamlessly woven together across every stage of a project.

- **Integration** – We unite multidisciplinary expertise to deliver holistic solutions that address structural, environmental, social, and economic dimensions of infrastructure.
- **Excellence** – We are committed to engineering precision, technical innovation, and global best practices to achieve lasting impact.
- **Collaboration** – We work hand-in-hand with clients, partners, and stakeholders to co-create resilient and future-ready infrastructure.
- **Sustainability** – We design with responsibility, ensuring that our projects contribute to climate resilience, community well-being, and long-term value.
- **Adaptability** – We embrace complexity and change, leveraging digital tools and forward-thinking strategies to meet the evolving needs of society.

Through these values, D8CL ensures that **every bridge, building, and city we help shape is more than an engineering achievement—it is a sustainable legacy for generations to come.**

People

The professional expertise of **D8 Consultants Ltd. (D8CL)** is built upon the accumulation and integration of knowledge, experience, and advanced information systems by a diverse team of highly skilled professionals. At D8CL, we believe that **people are our greatest asset**, driving innovation and delivering excellence in every project.

Our team consists of experienced engineers, planners, and specialists with extensive backgrounds in structural, civil, and multidisciplinary engineering. A significant portion of our professionals hold advanced degrees and international certifications, while many bring over a decade of proven expertise in complex infrastructure projects across Asia and beyond.



MARKETS & SERVICES / MARKET SEGMENTS

INFRASTRUCTURE



- ROADS & HIGHWAYS
- BRIDGES
- AIRPORTS
- PORTS & JETTIES
- TUNNELS
- PIPELINES
- COMMON UTILITY DUCTS
- SEISMIC HAZARD MITIGATION
- POWER PLANTS
- DAMS

ENVIRONMENT & WATER



- WATER RESOURCES
- EFFLUENT RECLAMATION AND REUSE
- WATER SUPPLY ENGINEERING
- PREVENTION AND TREATMENT FOR RIVER POLLUTION
- SOIL POLLUTION SURVEY AND REMEDIATION
- SOLID WASTE MANAGEMENT
- CONTROL OF ENVIRONMENTAL POLLUTION
- SUSTAINABLE ENGINEERING
- ENVIRONMENTAL MONITORING
- ENVIRONMENTAL IMPACT ASSESSMENT

BUILDING & FACILITIES



- RESIDENTIAL AND OFFICES
- COMMERCIAL
- ARTS, SPORTS & CULTURE
- HEALTHCARE
- EDUCATION & RESEARCH
- LOGISTICS CENTER
- INDUSTRIAL
- PARKING

LAND DEVELOPMENT



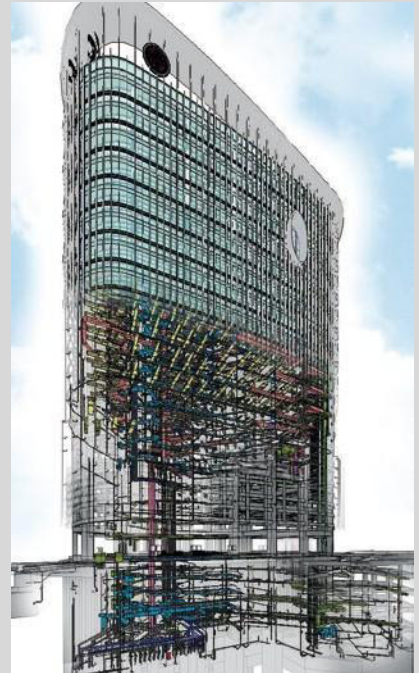
- NEW TOWNS AND COMMUNITIES
- RESORT AND RECREATION
- SLOPE LAND DEVELOPMENT
- URBAN REGENERATION
- SOIL & WATER CONSERVATION
- LAND RECLAMATION
- BROWNFIELD REDEVELOPMENT
- INDUSTRIAL AND BUSINESS PARKS

GEOMATICS



- UTILITY MANAGEMENT
- HAZARD/RISK MANAGEMENT
- PROJECT MANAGEMENT
- REAL-TIME MONITORING
- BIG DATA AND INFORMATION SYSTEMS

ENGINEERING DIGITALIZATION



- INTEGRATED BIM ADOPTION
- 3D CIVIL MODELING
- CONSTRUCTION PROJECT MANAGEMENT PLATFORM
- GEOINFORMATICS
- PUBLIC AFFAIR INFORMATION PLATFORM
- FACILITY MANAGEMENT
- DIGITAL TWIN

Transportation & Civil Engineering

- ROADS AND HIGHWAYS
- BRIDGES
- PORTS & JETTIES
- AIRPORTS

Structural Engineering

- BRIDGES AND VIADUCTS
- BUILDINGS & FACILITIES
- UNDERGROUND STRUCTURES
- STRUCTURAL ASSESSMENT AND REHABILITATION
- MICROVIBRATION ASSESSMENT AND SUPPRESSION

Geotechnical Engineering

- FOUNDATION AND DEEP EXCAVATION
- SLOPE PROTECTION AND EARTH RETAINING WORKS
- SEISMIC RISK
- TUNNELS
- GEOENVIRONMENTAL ENGINEERING
- IN-SITU AND LABORATORY TESTING
- GROUND IMPROVEMENT AND LAND RECLAMATION
- COASTAL ENGINEERING
- RISK MANAGEMENT
- INSTRUMENT INSTALLATION & MONITORING

Environmental Engineering

- WATER AND WASTEWATER TREATMENT
- WATER SUPPLY AND SEWAGE
- SOLID WASTE MANAGEMENT
- SOIL AND GROUNDWATER MANAGEMENT
- LANDSCAPE ENGINEERING
- ECOLOGICAL ENGINEERING
- ENVIRONMENTAL STUDIES AND MANAGEMENT
- GREENHOUSE GAS INVENTORY
- GREEN CERTIFICATION
- SOIL POLLUTION SURVEY
- SOIL REMEDIATION
- ENVIRONMENTAL MONITORING



Project and Construction Management

- PROJECT MANAGEMENT
- CONSTRUCTION MANAGEMENT & SUPERVISION

Architecture, Planning, Landscape and Interior Design

- ARCHITECTURE
- URBAN PLANNING AND DESIGN
- LANDSCAPE DESIGN
- INTERIOR DESIGN

Mechanical, Electrical and Plumbing Engineering

- ELECTRICAL SYSTEM
- INSTRUMENT & CONTROL SYSTEM
- ELECTRONIC TOLL COLLECTION FACILITIES
- PLUMBING SYSTEM
- FIRE PROTECTION SYSTEM
- HVAC SYSTEMS
- LIFTS & ESCALATORS

Engineering Digitalization

- BUILDING INFORMATION MODELING(BIM) & 3D MODELING
- GEOGRAPHIC INFORMATION SYSTEM(GIS)
- MANAGEMENT INFORMATION SYSTEM(MIS)
- SYSTEM ANALYSIS, DESIGN & DEVELOPMENT
- REMOTE SENSING IMAGERY
- UNMANNED AERIAL VEHICLE(UAV), UNMANNED AIRCRAFT SYSTEM(UAS)
- AUGMENTED REALITY, VIRTUAL REALITY
- INTERNET OF THINGS(IOT) APPLICATION
- DIGITAL TWIN

Geomatics

- UTILITY MANAGEMENT
- HAZARD/RISK MANAGEMENT
- CONSTRUCTION MANAGEMENT



MARKETS & SERVICES / SCOPE OF SERVICES

- PROJECT DEVELOPMENT
- FEASIBILITY STUDIES
- PROGRAM MANAGEMENT
- CONCEPTUAL/MASTER PLANNING
- GENERAL CONSULTANCY
- ENGINEERING PLANNING
- SITE RECONNAISSANCE & INVESTIGATION
- BASIC DESIGN
- DETAILED DESIGN
- CONSTRUCTION MANAGEMENT
- BIM INSTALLATION AND APPLICATION
- CONSTRUCTION SUPERVISION
- PROJECT MANAGEMENT
- RISK MANAGEMENT
- DESIGN REVIEW
- EXISTING WORKS EVALUATION
- IN-SITU/LAB TESTING
- MODELING & ANALYSIS
- INSTRUMENT INSTALLATION AND MONITORING
- COMMISSION & OPERATION TESTING
- ENVIRONMENTAL IMPACT ASSESSMENT
- FACILITY MANAGEMENT CONSULTANCY



CORPORATE INFORMATION

Name of the Company	D8 CONSULTANTS LTD. (D8CL)
Head Office/Mailing Address	H-407, Flat-5B, R-29, Mohakhali DOHS, Dhaka-1206, Bangladesh
Telephones	+8802224415476, +880 1711711274, +8801711792589
E-mail	info@d8cl.com
Website	www.d8cl.com
Founding Year as Proprietorship Firm	2016
Year of Registration as Limited Company	2019
Type of Organization	Private Limited Company
National Consulting Association Membership	Bangladesh Association of Consulting Engineers (BACE)
Professional Affiliation	<ul style="list-style-type: none"> - American Institute of Architects (AIA) - American Society of Civil Engineers (ASCE) - Structural Engineering Institute (SEI) - International Association of Engineers (IAENG) - Japan Society of Civil Engineers (JSCE) - Chartered Association of Building Engineers, UK - Royal Academy of Engineering, UK - The Institution of Structural Engineers, UK - Institution of Civil Engineers, UK - Institution of Engineers, Bangladesh - Institution of Architects, Bangladesh
Number and Place of Registration	Registration No. C-151449/2019 Registered in Dhaka, Bangladesh
Registration with ADB	ADB CMS No.030781
Registration with World Bank	SUPP096121
Registration with United Nations	994647
Registration with IsDB	Registered as Consultant.
Registration with European Bank for Reconstruction & Development	Registered as Consultant.
Registration with USAID	Registered as Consultant.
Registration with United Nations Framework Convention on Climate Change (UNFCCC)	Registered as Consultant.
TIN Certificate No.	TIN 141210584829/Circle-090 (Company)
Trade License	Trade License No. TRAD/DNCC/059927/2022 Renewed up to June 30, 2026
Value Added Tax (VAT) Registration No.	BIN: 003258577-0202
Name of the Banker	Southeast Bank PLC, Mohakhali Branch, Dhaka Al Arafah Islami Bank PLC, Mohakhali Branch, Dhaka Bank Asia PLC, Mohakhali Branch, Dhaka Eastern Bank PLC, Gulshan Branch, Dhaka.
Collaboration Across	Japan, Singapore, Malaysia, China, India, Philippines, USA, Canada, Turkey, New Zealand, UK, South Korea, Nepal, Vietnam.

ORGANIZATIONAL STRUCTURE

Under the leadership of Engr. Jaher Wasim, Managing Director & CEO, and supported by a highly accomplished Board of Directors, D8CL continues to expand its footprint across Asia, establishing itself as a trusted partner to governments, development agencies, and private sector clients.

Name and Qualification of the Directors and Top Management	Designation	Years of Experience
Abul Kashem M.Sc. Engg. Civil, B.Sc. Engg., MBA	Executive Director	43
Jaher Wasim, SEng M.Sc., B.Sc. Engg. Civil (BUET)	Managing Director & CEO	13
Anwar Hossain M.Sc. Engg. Civil, B.Sc. Engg. Civil	Director (Infrastructure Division)	41
Dr. Saiful Islam PhD (USA), M.Sc. (USA)	Director (Building Division)	30
Dr. Asef Mohammad Redwan Phd (USA), M.Sc. (USA), B.Sc. Engg. Civil (BUET)	Director (Environmental Division)	13
Razoyan Mahabub M.Sc. Germany, B.Sc. Engg. Civil (BUET)	Director (Planning & Construction)	15
Nilofar Sultana B.Sc. Engg. (CSE)	Director (Finance, IT & Admin) & CFO	13
Asfaq Ahmed B.Sc. Engg. Civil (BUET), MBA	Director (Operation) & COO	13

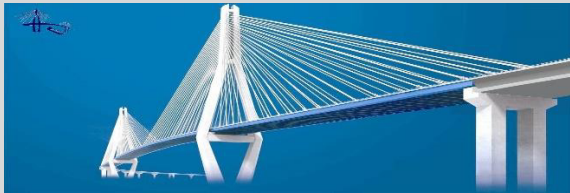
INTERNATIONAL PARTNER CONSULTING FIRM

Name of the Company	Country
ASR Engineering PC	USA
Southwest Municipal Engineering Design & Research Institute of China	CHINA
Aurecon Group	THAILAND
Archetype Group	THAILAND
Sterling & Wilson Renewable Company Limited.	INDIA
Eptisa Servicios de Ingeniería	SPAIN
DM Engineering. Co. Ltd.	SOUTH KOREA
Equatorial Space Systems Pte. Ltd.	SINGAPORE
Commercial Space Technology Ltd.	UK
Environmental and Resource Management Consultants Ltd. (ERMC)	NEPAL
ATAD Steel Structure Corporation	VIETNAM
Naue Asia Sdn. Bhd.	MALAYSIA
Padeco Co., Ltd.	JAPAN
Tumas Engineering Consulting and Contracting Co.	TURKEY

EXPERIENCES / INFRASTRUCTURE

Roads and Highways

D8 Consultants Ltd. (D8CL) has been providing comprehensive services in the development of local, regional, and national roads and highways, including feasibility studies, detailed design, construction supervision, and environmental and social impact assessments. Our expertise is demonstrated through projects such as the **Feasibility Study of Road Development for RHD in Narshingdi**, addressing traffic growth, alignment optimization, and socio-economic benefits, as well as the **Feasibility Study of Road Connectivity in the Hilly Area from Naniarchar to Langadu, Rangamati under 34 ECB of the Bangladesh Army**, where the firm successfully navigated challenging topography, geotechnical complexities, and environmental sensitivities. D8CL's experience also covers **viaducts, flyovers, interchanges, and intelligent traffic/toll systems**, with a strong focus on integrating **climate resilience, sustainability, and community needs** into every project, ensuring that infrastructure solutions are technically robust, socially inclusive, and environmentally responsible. **Through innovation and collaboration with local and international partners, D8CL continues to strengthen its role as a trusted partner in shaping modern and resilient transportation networks.**



TRACK RECORDS

- Feasibility Study of 10.4 Km Road with Bridges under RHD Narshingdi, Bangladesh.
- Feasibility Study of 35 Km Road with Bridges at Rangamati under 34 ECB, Bangladesh.
- Road Alignment and Pavement Design for 100 MW Solar Power Plant at Jamalpur, Bangladesh
- Approach Road Design for Power Plant in Ashuganj, Bangladesh
- Detailed Design of Approach Road for a Bridge under LGED, Bangladesh

Bridges & Viaducts

D8 Consultants Ltd. (D8CL) has continuously advanced its expertise in **bridge engineering and innovative construction technologies** through involvement in landmark projects in Bangladesh and abroad. The firm has successfully delivered the **Detailed Design of the Kadam Rasul Bridge (Cable-Stayed Main Span) over the Shitalakya River**, one of the most significant cable-supported bridge projects in Bangladesh, and conducted the **Feasibility Study of a Cable-Stayed Bridge at Sreemangal** across a scenic valley. Internationally, D8CL contributed to the **ADB-funded Bataan–Cavite Interlink Bridge Project in the Philippines**, one of Asia's most ambitious long-span marine bridge projects, and the **North–South Corridor Project in Singapore**, involving complex urban bridge and highway systems. In addition, D8CL has participated in numerous other **bridge design, evaluation, and supervision assignments**, gaining valuable exposure to state-of-the-art engineering methods including cable-stayed systems, long-span solutions, and climate-resilient design practices. Alongside technical excellence, D8CL emphasizes **aesthetic integration, cultural context, and environmental sensitivity**, ensuring its bridges not only serve as vital transport links but also as enduring landmarks for the communities they connect.



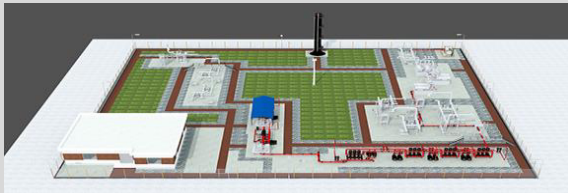
TRACK RECORDS

- Kadamrasul Bridge (Cable Stayed) over Shitalakya River, Bangladesh.
- Detailed Design of PSC Girder Bridge at Jamalpur, Bangladesh.
- Feasibility Study of Cable Stayed Bridge at Sreemangal, Bangladesh.
- Feasibility Study for Short Span Steel Bridges in Bangladesh
- Steel Box Girder Ramp for Flyover at Chittagong, Bangladesh
- Bataan-Cavite Interlink Bridge Project in Philippines.
- North-South Corridor Expressway Project in Singapore.

EXPERIENCES / INFRASTRUCTURE

Power Plants

D8 Consultants Ltd. (D8CL) has established strong capabilities in the planning, design, and engineering of power plants, delivering innovative, sustainable, and cost-effective solutions for clients across diverse energy sectors. Our expertise spans the full project cycle, from feasibility studies and master planning to detailed engineering and construction supervision, ensuring that every stage is executed with precision and technical excellence. With a multidisciplinary team of structural, mechanical, electrical, and environmental engineers, D8CL provides integrated services for conventional thermal power plants, combined cycle facilities, and renewable energy projects, focusing on performance, safety, and efficiency. We emphasize climate resilience, environmental compliance, and operational sustainability in all our designs, incorporating international standards and advanced technologies to create reliable and future-ready infrastructure. Our team is adept at developing optimized layouts, structural systems, and balance-of-plant solutions, customized to meet client-specific requirements and site conditions. By collaborating with leading global technology providers and leveraging local knowledge, D8CL consistently delivers power plant projects that address rising energy demands while supporting environmental stewardship and long-term resilience.

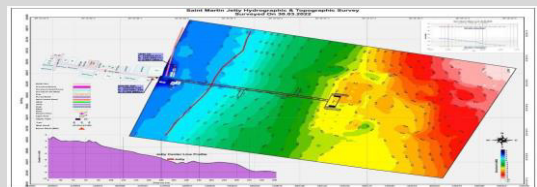
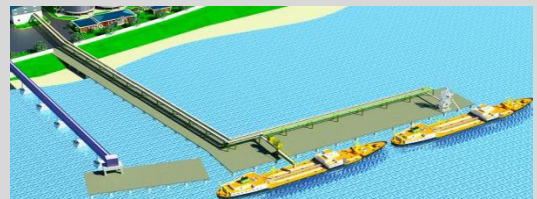


TRACK RECORDS

- Feasibility Study and Detailed Design of RMS of Repowering 4th Unit - 100 MW Power Plant at Ghorashal.
- Consultancy Services for Feasibility Study and Detail Design of 100 MW Gas Turbine Power Plant at Jalalabad, Sylhet.
- Feasibility Study of 200 KW Solar Panel over a Roof top of 20 Storied Building at Rupganj.
- Consultancy Services for Feasibility Study & Detail Design of 100 MW Solar Power Plant at Madarganj, Jamalpur.

Jetties & Ports

D8 Consultants Ltd. (D8CL) has extensive expertise in the planning, design, and engineering of jetties and port infrastructure, providing end-to-end solutions that meet international standards while addressing local environmental and operational conditions. Our services cover feasibility studies, geotechnical investigations, hydrodynamic and coastal modeling, structural and marine works design, and construction supervision. With a multidisciplinary team of structural, geotechnical, marine, and environmental engineers, D8CL delivers efficient, safe, and sustainable solutions for cargo terminals, container ports, oil and gas jetties, ferry terminals, and multipurpose port facilities. We emphasize resilience against climate change impacts, including sea-level rise, storm surges, and seismic risks, ensuring long-term durability and functionality. Our designs optimize layouts for efficient cargo handling, vessel berthing, and port operations while incorporating sustainable dredging, shore protection, and environmental safeguards. Through collaboration with international technology providers and adherence to global best practices, D8CL ensures that each project enhances connectivity, trade efficiency, and economic growth. With a strong commitment to innovation, sustainability, and client-focused solutions, we deliver future-ready jetty and port infrastructure that supports regional and global maritime development.



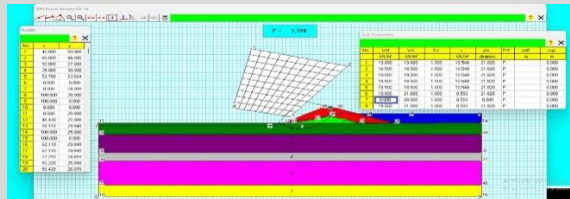
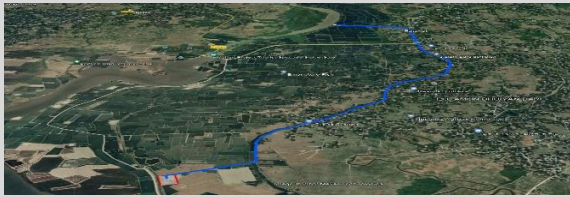
TRACK RECORDS

- Design Review of Jetty at Ashuganj under Directorate General of Food, Bangladesh.
- Detailed Design of Lighterage Jetty at Bangladesh.
- Detailed Design of Jetty at West Africa over Bankasoka River.
- Design Review of Jetty at Pangaon under BIWTA, Bangladesh

EXPERIENCES / INFRASTRUCTURE

Dams

D8 Consultants Ltd. (D8CL) possesses comprehensive expertise in the planning, design, and engineering of dam and hydraulic infrastructure, delivering technically robust, safe, and sustainable solutions. Our services encompass feasibility studies, hydrological and geotechnical investigations, structural and hydraulic design, environmental and social impact assessments, and construction supervision. With a multidisciplinary team of civil, structural, geotechnical, and environmental engineers, D8CL has experience in designing gravity, embankment, and roller-compacted concrete dams, as well as associated spillways, intakes, tunnels, and powerhouses. We emphasize resilience against seismic, flood, and climate change-related risks to ensure long-term safety and operational reliability. Our designs optimize water storage, flood control, irrigation, and hydropower generation while incorporating environmental safeguards and sustainable practices. By integrating international best practices with local site conditions and collaborating with global technology partners, D8CL delivers efficient and cost-effective solutions tailored to client needs. With a strong commitment to innovation, sustainability, and risk management, D8CL ensures that every dam project enhances water resource management, energy generation, and regional development while maintaining ecological balance and community benefits.

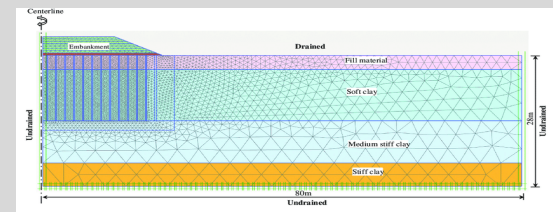
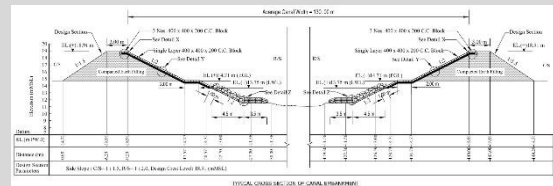


TRACK RECORDS

- Feasibility Study and Detailed Design of a Dam over Feni Over for 50 MLD Water Treatment Plant at Bangabandhu Shilpa Nagar, Mirsarai, Feni.

Embankments

D8 Consultants Ltd. (D8CL) offers specialized expertise in the planning, design, and construction supervision of embankments, delivering safe, durable, and sustainable solutions for flood protection, river training, and infrastructure support. Our multidisciplinary team of geotechnical, civil, and hydraulic engineers provides comprehensive services, including site investigations, soil and slope analysis, stability and seepage assessments, and detailed structural and hydraulic design. D8CL has experience in designing earth, rock-fill, and composite embankments for riverbanks, highways, railways, and coastal protection, with a strong focus on resilience against flooding, erosion, seismic activity, and climate change impacts. We integrate advanced modeling, material optimization, and monitoring systems to ensure long-term stability, functionality, and cost-effectiveness. Our designs also consider environmental and social impacts, promoting sustainable water management and protection of surrounding ecosystems. By combining international best practices with local knowledge and site-specific conditions, D8CL delivers embankment solutions that safeguard communities, infrastructure, and economic assets while supporting regional development and resilience against natural hazards.



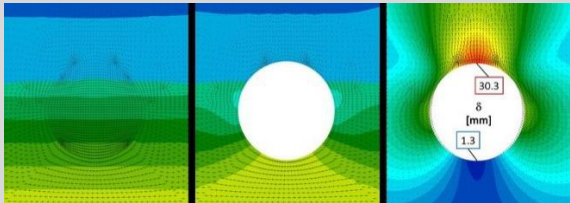
TRACK RECORDS

- Feasibility Study and Detailed Design of a 20 Km Long Embankment at Madarganj, Jamalpur, Bangladesh.
- Feasibility Study for Embankment Construction for a Road Project in Hill Tracts of Bangladesh.

EXPERIENCES / INFRASTRUCTURE

Tunnels

D8 Consultants Ltd. (D8CL) has extensive expertise in the planning, design, and engineering of tunnel infrastructure, delivering safe, efficient, and sustainable solutions for transportation, water conveyance, and utility networks. Our multidisciplinary team of civil, geotechnical, structural, and environmental engineers provides end-to-end services, including feasibility studies, geological and geotechnical investigations, tunnel alignment optimization, detailed structural and hydraulic design, and construction supervision. D8CL is experienced in various tunneling methods, including cut-and-cover, bored, immersed, and drill-and-blast techniques, ensuring optimal solutions for complex ground conditions and urban constraints. We emphasize safety, durability, and resilience against seismic activity, groundwater pressure, and other environmental risks, integrating advanced modeling, monitoring systems, and risk management strategies. Our designs also incorporate sustainable practices, minimizing environmental impact and ensuring efficient operation and maintenance. By combining international best practices with local knowledge, D8CL delivers tunnel projects that enhance connectivity, support infrastructure development, and provide long-term operational reliability while promoting safety, environmental stewardship, and resilience for future generations.

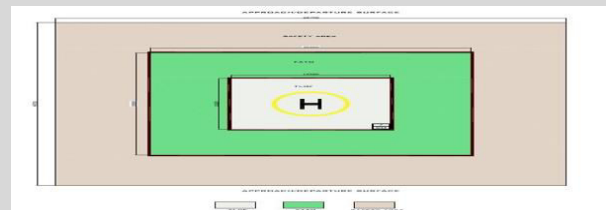


TRACK RECORDS

- Feasibility Study of Utility Tunnel.
- Feasibility Study of Cut and Cover Tunnel for crossing a Highway in Bangladesh.
- Detailed Design of Tunnel at Singapore

Airports

D8 Consultants Ltd. (D8CL) possesses comprehensive expertise in the planning, design, and engineering of airport infrastructure, delivering innovative, efficient, and sustainable solutions for both civil and cargo operations. Our multidisciplinary team of civil, structural, mechanical, electrical, and environmental engineers provides end-to-end services, including feasibility studies, master planning, airside and landside layout design, terminal and runway design, pavement and apron engineering, and construction supervision. D8CL emphasizes resilience, safety, and compliance with international aviation standards while integrating climate adaptation measures to ensure long-term operational reliability. We optimize passenger flow, cargo handling, and aircraft movement efficiency through advanced design and modeling techniques, while incorporating sustainable practices in energy use, water management, and environmental protection. By combining global best practices with local site knowledge and collaborating with leading technology partners, D8CL delivers airport projects that enhance connectivity, promote economic growth, and support regional and international trade. Our commitment to innovation, sustainability, and client-focused solutions ensures future-ready airport infrastructure that meets evolving demands of modern aviation.



TRACK RECORDS

- Delivered Detailed Design services to Samsung C & T for various structures under Hazrat Shahjalal Airport Expansion Project (3rd Terminal).
- Detailed Design of Helipad at Various Places

EXPERIENCES / INFRASTRUCTURE

Sustainable Design

D8 Consultants Ltd. (D8CL) has strong expertise in sustainable design and green building solutions, delivering environmentally responsible, energy-efficient, and cost-effective infrastructure. Our multidisciplinary team of architects, structural, mechanical, electrical, and environmental engineers provide end-to-end services, including site analysis, green building certification consulting, energy modeling, material selection, and sustainable construction supervision. D8CL emphasizes the integration of renewable energy systems, water and waste management, natural lighting and ventilation, and low-impact materials to reduce carbon footprint and operational costs. Our designs comply with international green building standards such as LEED, BREEAM, and local sustainability regulations, ensuring high-performance buildings that prioritize occupant health, comfort, and productivity. By combining global best practices with local context, D8CL delivers innovative solutions that balance aesthetics, functionality, and environmental stewardship. Our sustainable design approach enhances energy efficiency, resilience, and lifecycle performance, supporting clients in achieving long-term economic, social, and ecological benefits. With a commitment to innovation, sustainability, and client-focused solutions, D8CL drives the development of green, future-ready buildings that meet the demands of modern infrastructure.



TRACK RECORDS

- Detailed Design of 5 Storied Green Building for NZ Garments at Hotapara, Gazipur, Bangladesh.
- Detailed Design of 5 Storied Green Building for Radiance Knitwear at Ashulia, Savar, Bangladesh.
- Detailed Design of 5 Storied Green Building for Diamond Wooltex at Gazipur, Bangladesh.

Water Supply & Sanitation

D8 Consultants Ltd. (D8CL) offers comprehensive expertise in the planning, design, and implementation of water supply systems, delivering safe, efficient, and sustainable solutions for urban, industrial, and rural communities. Our multidisciplinary team of civil, hydraulic, and environmental engineers provides end-to-end services, including feasibility studies, source assessment, water treatment plant design, distribution network modeling, storage and pumping infrastructure, and construction supervision. D8CL emphasizes reliability, water quality, and operational efficiency while integrating climate resilience and environmental protection measures. Our designs optimize energy use, minimize losses, and ensure sustainable management of water resources, incorporating modern technologies such as smart monitoring and automation systems. By combining international best practices with local knowledge and site-specific conditions, D8CL delivers water supply projects that enhance public health, support economic development, and improve community resilience. With a strong commitment to sustainability, innovation, and client-focused solutions, D8CL ensures future-ready water infrastructure that meets growing demand while protecting natural resources and promoting long-term environmental stewardship.



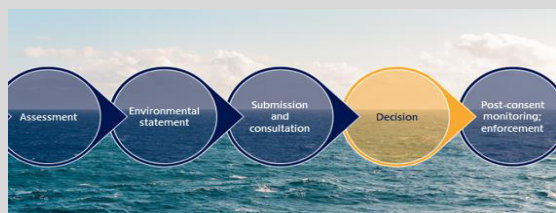
TRACK RECORDS

- Dhaka Sanitation Improvement Project (DSIP) Design and Build Contract for Reconstruction of Western Trunk Main - Package WD3
- Water Supply Network under Emergency Assistance Project of ADB at Coxsbazar, Bangladesh.
- 50 MLD Water Treatment Plant Project in National Special Economic Zone (NSEZ) at Mirsarai, Chittagong, Bangladesh.
- Consultancy Services for Detailed Design of UNDP Landfill Project at Camp 26, Coxsbazar, Bangladesh
- Water Treatment Plant at Palonkhali, Coxsbazar
- FSM System Development at Mithaichari, Coxsbazar

EXPERIENCES / INFRASTRUCTURE

Environmental Impact Assessment

D8 Consultants Ltd. (D8CL) has extensive expertise in Environmental Impact Assessment (EIA), providing comprehensive services that ensure infrastructure and development projects are sustainable, compliant, and socially responsible. Our multidisciplinary team of environmental scientists, civil and structural engineers, and social specialists conducts rigorous assessments, including baseline studies, ecological and biodiversity surveys, water and air quality analysis, noise and vibration studies, and social impact evaluations. D8CL develops mitigation measures, monitoring plans, and environmental management strategies to minimize adverse effects and enhance project sustainability. We ensure compliance with national regulations and international standards, including IFC, World Bank, and ADB guidelines, facilitating smooth project approvals and stakeholder engagement. Our approach integrates technical excellence with community consultation, promoting environmental stewardship, climate resilience, and long-term operational sustainability. By combining global best practices with local knowledge, D8CL delivers actionable, practical, and effective EIA solutions that support informed decision-making, safeguard natural resources, and contribute to sustainable infrastructure development, balancing economic growth with ecological and social responsibility.

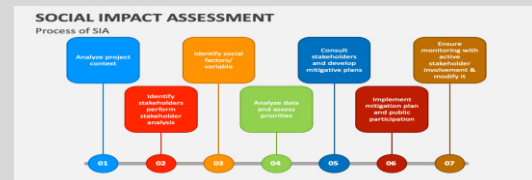


TRACK RECORDS

- ESIA for Construction of a 100m Iconic Tower at Jamalpur.
- ESIA for Low-Cost Housing at Vashantek, Dhaka.
- ESIA Cold Storage Facilities Design for Japan Bangla Food Factory.
- Feasibility Study of 10.4 Km Road under RHD Narshingdhi, Bangladesh.
- Feasibility Study of 35 Km Road at Rangamati under 34 ECB, Bangladesh.

Social Impact Assessment

D8 Consultants Ltd. (D8CL) possesses strong expertise in Social Impact Assessment (SIA), providing comprehensive analyses to ensure infrastructure and development projects are socially responsible, inclusive, and sustainable. Our multidisciplinary team of social scientists, engineers, and environmental specialists conducts in-depth studies on community demographics, livelihoods, land use, cultural heritage, resettlement needs, and stakeholder perceptions. D8CL develops mitigation and management strategies to address potential social risks, including displacement, loss of income, and community disruption, while enhancing positive impacts such as local employment, skill development, and community engagement. We ensure compliance with national regulations and international standards, including IFC, World Bank, and ADB guidelines, facilitating smooth project approvals and fostering trust with affected communities. By combining global best practices with local knowledge, D8CL delivers actionable and practical SIA solutions that support informed decision-making, promote social equity, and enhance community resilience. Our approach integrates rigorous analysis, stakeholder participation, and sustainable planning, enabling infrastructure projects to balance economic growth with social responsibility and long-term community well-being.



TRACK RECORDS

- Feasibility Study for Climate Resilient Resort Design at Satkhira.
- Feasibility Study of 35 Km Road at Rangamati under 34 ECB , Bangladesh.
- Feasibility Study for Construction of a 100m Iconic Tower at Jamalpur.
- Feasibility Study for Low-Cost Housing at Vashantek, Dhaka.
- Feasibility Study for Cold Storage Facilities Design for Japan Bangla Food Factory.

EXPERIENCES / BUILDINGS & FACILITIES

Residentials

D8 Consultants Ltd. (D8CL) offers comprehensive expertise in the planning, design, and construction of residential buildings, delivering safe, functional, and aesthetically appealing solutions tailored to client needs. Our multidisciplinary team of architects, structural, mechanical, electrical, and environmental engineers provide end-to-end services, including feasibility studies, master planning, architectural design, structural and MEP design, and construction supervision. D8CL emphasizes resilience, safety, and energy efficiency, integrating sustainable materials, natural lighting, ventilation, and modern building technologies to enhance comfort and reduce operational costs. We design a range of residential projects, from individual homes and villas to high-rise apartments and gated communities, optimizing layouts for functionality, accessibility, and occupant well-being. By combining international best practices with local knowledge, D8CL ensures compliance with building codes and regulatory standards while incorporating climate-resilient features. Our client-focused approach delivers residential buildings that balance aesthetics, performance, and sustainability, creating vibrant, safe, and future-ready living environments that enhance quality of life and long-term value for occupants.



TRACK RECORDS

- Detailed Design of 30 Storied Condominium in Dhaka, Bangladesh
- Detailed Design of 22 Storied Tower in Dhaka, Bangladesh
- Detailed Design of 20 Storied Residence in Rupganj, Bangladesh
- Detailed Design of 15 Storied Residence in Dhaka, Bangladesh
- Detailed Design of 15 Storied Residence in Dhaka, Bangladesh
- Detailed Design of 15 Storied Residence in Dhaka, Bangladesh
- Detailed Design of 12 Storied Residence in Dhaka, Bangladesh
- Detailed Design of 10 Storied Residence in Dhaka, Bangladesh

Commercials

D8 Consultants Ltd. (D8CL) has extensive expertise in the planning, design, and construction of commercial buildings, delivering innovative, efficient, and sustainable solutions that meet client and market demands. Our multidisciplinary team of architects, structural, mechanical, electrical, and environmental engineers provide end-to-end services, including feasibility studies, master planning, architectural and structural design, MEP systems design, and construction supervision. D8CL emphasizes functionality, safety, and energy efficiency, integrating modern building technologies, sustainable materials, and climate-resilient features to optimize operational performance and reduce lifecycle costs. We design a wide range of commercial facilities, including office complexes, shopping malls, hotels, and mixed-use developments, focusing on spatial efficiency, aesthetics, and user experience. By combining international best practices with local knowledge and regulatory compliance, D8CL ensures high-quality, future-ready commercial buildings that support business growth and economic activity. Our client-centered approach delivers structures that balance innovation, sustainability, and resilience, creating safe, efficient, and visually appealing spaces that enhance productivity, customer satisfaction, and long-term value.



TRACK RECORDS

- Detailed Design of 21 Storied Commercial in Dhaka, Bangladesh
- Detailed Design of 15 Storied Commercial in Dhaka, Bangladesh
- Detailed Design of 15 Storied Tower in Dhaka, Bangladesh
- Detailed Design of 12 Storied Commercial in Dhaka, Bangladesh
- Detailed Design of 10 Storied Commercial cum Residential in Savar, Bangladesh

EXPERIENCES / BUILDINGS & FACILITIES

Shopping Malls

D8 Consultants Ltd. (D8CL) has specialized expertise in the planning, design, and construction of shopping malls, delivering functional, safe, and visually appealing commercial spaces that enhance customer experience and operational efficiency. Our multidisciplinary team of architects, structural, mechanical, electrical, and environmental engineers provide end-to-end services, including feasibility studies, master planning, architectural and interior design, structural and MEP system design, and construction supervision. D8CL emphasizes safety, sustainability, and energy efficiency, integrating modern building technologies, climate-resilient features, natural lighting, and ventilation to optimize performance and reduce operational costs. We focus on efficient circulation, accessibility, and zoning to enhance shopper flow and tenant satisfaction while meeting local regulatory and international standards. By combining global best practices with local knowledge, D8CL delivers future-ready shopping malls that support commercial success, economic growth, and environmental sustainability. Our client-focused approach ensures spaces that are innovative, resilient, and adaptable, providing long-term value for developers, tenants, and visitors alike.



TRACK RECORDS

- Detailed Design of 10 Storied Shopping Mall in Savar, Bangladesh
- Detailed Design of 6 Storied Market in Dhaka, Bangladesh
- Detailed Design of 10 Storied Mixed use Building in Savar, Bangladesh
- Detailed Design of 10 Storied Mixed-use Building in Dhaka, Bangladesh
- Detailed Design of 15 Storied Commercial Cum Residential at Panthapath, Dhaka.
- Detailed Design of 10 Storied Commercial Cum Residential at Mirpur, Dhaka.

Hospital Facilities

D8 Consultants Ltd. (D8CL) has extensive expertise in the planning, design, and construction of hospital facilities, delivering safe, efficient, and patient-centered healthcare infrastructure. Our multidisciplinary team of architects, structural, mechanical, electrical, and biomedical engineers provide end-to-end services, including feasibility studies, master planning, architectural and structural design, MEP and medical gas systems design, and construction supervision. D8CL emphasizes functional efficiency, infection control, safety, and sustainability, integrating modern healthcare technologies, energy-efficient systems, and climate-resilient features to optimize operational performance and reduce lifecycle costs. We design a wide range of healthcare facilities, from primary health centers to multi-specialty hospitals, focusing on optimal space utilization, patient flow, accessibility, and staff workflow. By combining international best practices with local knowledge and compliance with healthcare regulations, D8CL delivers hospital facilities that enhance patient care, safety, and staff productivity. Our client-focused approach ensures future-ready, resilient, and sustainable healthcare infrastructure that meets evolving medical standards while providing long-term value for communities and healthcare providers.



TRACK RECORDS

- Design of 6 Storied with single Basement Hospital in Sirajganj.
- Consultancy Services for Feasibility Study and Detailed Design for Steel Structure Hospital Building for Tairunnesa Memorial Medical College, Gazipur. Design of Multistoried Clinic in Noakhali, Bangladesh.
- Feasibility Study of Construction of 200 Bed Private Hospital with Solar PV Panel as Alternative Energy Source at Noakhali.

EXPERIENCES / BUILDINGS & FACILITIES

Educational Facilities

D8 Consultants Ltd. (D8CL) has extensive expertise in the planning, design, and construction of educational facilities, delivering safe, functional, and inspiring learning environments. Our multidisciplinary team of architects, structural, mechanical, electrical, and environmental engineers provide end-to-end services, including feasibility studies, master planning, architectural and structural design, MEP systems design, and construction supervision. D8CL emphasizes resilience, safety, accessibility, and sustainability, integrating energy-efficient systems, natural lighting, ventilation, and climate-resilient features to enhance comfort and reduce operational costs. We design a wide range of educational projects, including schools, colleges, universities, and training centers, optimizing layouts for student flow, faculty workflow, and multifunctional learning spaces. By combining international best practices with local knowledge and regulatory compliance, D8CL delivers educational facilities that promote effective learning, collaboration, and well-being. Our client-focused approach ensures future-ready, resilient, and sustainable infrastructure that supports academic excellence, community development, and long-term operational efficiency, creating safe and vibrant spaces for students, faculty, and staff.



TRACK RECORDS

- Feasibility Study & Detailed Design of a School at Welcare Housing, Rugganj, Bangladesh
- Design of 10 Storied Medical College Building for Tairunnesa Memorial Medical College at Gazipur, Bangladesh.
- Feasibility Study of a Private University at Noakhali, Bangladesh.
- Feasibility Study of Student Hall Construction for MIST, Dhaka, Bangladesh.

Industrial Buildings

D8 Consultants Ltd. (D8CL) has strong expertise in the planning, design, and construction of industrial buildings, delivering robust, efficient, and sustainable solutions for diverse manufacturing, processing, and logistics operations. Our multidisciplinary team of structural, civil, mechanical, electrical, and environmental engineers provides end-to-end services, including feasibility studies, site layout planning, structural and MEP design, material handling systems, and construction supervision. D8CL emphasizes functionality, safety, and resilience, integrating energy-efficient systems, sustainable materials, and climate-adaptive design features to optimize operational efficiency and reduce lifecycle costs. We design a wide range of industrial facilities, including factories, warehouses, production plants, and distribution centers, focusing on workflow optimization, equipment accommodation, and compliance with safety and environmental standards. By combining international best practices with local knowledge, D8CL delivers industrial buildings that meet client-specific requirements while promoting sustainability, resilience, and long-term performance. Our client-centered approach ensures future-ready, safe, and cost-effective industrial infrastructure that supports productivity, operational efficiency, and regional economic growth.



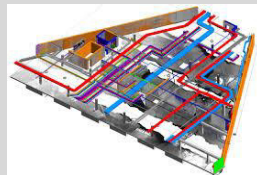
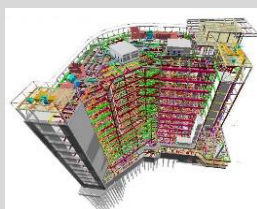
TRACK RECORDS

- Detailed Design of Textile Greenfield Factory for Huntsman Inc. USA in AMEZ, Munshiganj, Bangladesh. with Thailand Firm.
- Detailed Design of Industrial Building at Gazipur for Mamel Fashion Limited.
- Detailed Design of Industrial Buildings for Hamza Group in Gazipur, Bangladesh.

EXPERIENCES / BIM

Planning & Design using BIM

D8 Consultants Ltd. (D8CL) leverages Building Information Modeling (BIM) to deliver advanced, integrated, and efficient facility design solutions across diverse sectors. Our multidisciplinary team of architects, structural, mechanical, electrical, and environmental engineers utilize BIM for end-to-end project development, including conceptual design, detailed engineering, clash detection, construction planning, and lifecycle management. By adopting BIM, D8CL enhances collaboration among stakeholders, improves design accuracy, reduces errors, and optimizes project schedules and costs. Our approach integrates 3D modeling, data-rich documentation, and simulation tools to analyze structural performance, energy efficiency, and building systems coordination. We apply BIM in designing commercial, residential, healthcare, educational, industrial, and infrastructure facilities, ensuring sustainability, resilience, and operational efficiency. By combining international best practices with local knowledge, D8CL delivers intelligent, future-ready facilities that enhance constructability, maintenance, and asset management. Our client-focused BIM solutions provide comprehensive visualization, informed decision-making, and long-term value, enabling efficient project delivery and superior facility performance throughout the building's lifecycle.

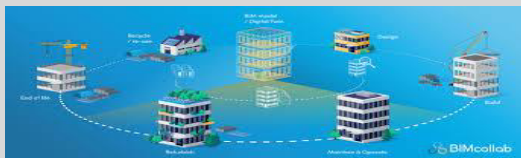


TRACK RECORDS

- Detailed Design of Industrial Building of Huntsman using BIM
- Detailed Design of Industrial Complex of Manel Fashion Ltd. using BIM
- BIM Modeling of Steel Structure Factory Building for NZ Group.
- BIM Modeling of Commercial Building in Dhaka, Bangladesh.
- Detailed Design of 14 Storied Office Building
- Detailed Design of School Building
- Detailed Design of Industrial Shed

Construction Management

D8 Consultants Ltd. (D8CL) applies Building Information Modeling (BIM) to enhance construction management, delivering efficient, accurate, and collaborative project execution. Our multidisciplinary team leverages BIM for construction planning, scheduling (4D), cost estimation (5D), clash detection, and risk mitigation, ensuring streamlined workflows and reduced delays. By integrating 3D models with time, cost, and resource data, D8CL enables real-time monitoring, progress tracking, and coordination among contractors, consultants, and stakeholders. BIM facilitates optimized sequencing, material management, and on-site logistics, improving constructability and minimizing rework. We apply BIM-based construction management across diverse projects, including residential, commercial, industrial, healthcare, and infrastructure developments, ensuring adherence to quality, safety, and sustainability standards. By combining international best practices with local knowledge, D8CL delivers projects with enhanced predictability, efficiency, and cost control. Our client-focused approach ensures that BIM-driven construction management not only accelerates project delivery but also improves communication, reduces risks, and supports long-term operational efficiency, providing measurable value throughout the construction lifecycle.



TRACK RECORDS

- Construction monitoring of 22 storied residence using BIM
- Construction implementation of 30 storied residence using BIM
- BIM Modeling for construction management of residential complex in Dhaka, Bangladesh.
- Construction Management of 10 Storied Building
- Construction Management of 15 Storied Mixed use Building using BIM





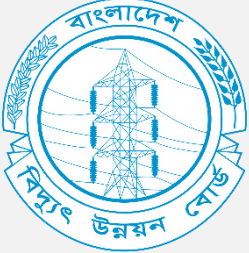





KEY PROFESSIONAL, TECHNICAL & ADMINISTRATIVE STAFFS

D8 Consultants Limited (D8CL) maintains a roster of professional staffs contended with highly experienced professionals and skilled technical personnel specialized in diverse disciplines and can offer the best team for almost any project related to project activities. Besides, to meet any special requirement of a project, D8CL can pool the best experts in the field from home or abroad. The table below summarizes D8CL personnel by discipline.

Number of Professionals and Technical Personnel

A. Professional Staff	Nos.
Architect	04
Structural Engineer	05
Soil/Foundation Engineer	02
Bridge Engineer	02
Transportation Engineer	02
Electrical Engineer	02
Mechanical Engineer	02
Plumbing, Water Supply and Sanitation Engineer	02
Financial Expert	01
Environment Expert	01
Sociologist	01
Resettlement Specialist	01
Statistician	01
Data Management Expert	01
Construction Engineer (Building/Infrastructure)	04
Estimator/Quantity Surveyor	02
Sub-total	33
B. Technical Staff	
Diploma Engineer: Civil	5
Diploma Engineer: Electrical	3
Diploma Engineer: Mechanical	3
Draftsman/CAD Technician	4
Sub-total	15
C. Administrative and Supporting Staff	
Office Administration	4
Accounts Section	2
Driver, Messenger, Office Boy etc.	5
Sub-total	11
Grand Total (A+B+C)	59

LIST OF CLIENTS OF D8 CONSULTANTS LTD.

LIST OF CLIENTS/PARTNERS/ASSOCIATES

AFFILIATION WITH BILATERAL/MULTILATERAL DONOR AGENCY

 Asian Development Bank	 THE WORLD BANK	 UNITED NATIONS GLOBAL MARKETPLACE	 European Bank for Reconstruction and Development
		 DANIDA Danish International Development Agency	
		 海外経済協力基金 OECD THE OVERSEAS ECONOMIC COOPERATION FUND, JAPAN	
 KOICA Korea International Cooperation Agency	 Canadian International Development Agency	 IFC International Finance Corporation WORLD BANK GROUP	
 IOM UN MIGRATION	 AIIB ASIAN INFRASTRUCTURE INVESTMENT BANK	 giz Deutsche Gesellschaft für Internationale Zusammenarbeit (GIZ) GmbH	

List of Equipment's and FEM Software's

Sl. No.	Name of the Equipment	Type of Equipment/Software
1.	Bentley STAAD.Pro SS5	Structural Analysis
2.	Autodesk Civil 3D	Road Geometry Design
3.	CSI SAFE	Foundation Design
4.	CSI ETABS	Tall Building Design
5.	Autodesk AutoCAD	Drafting Software
6.	Midas Civil	Bridge Analysis and Design Software
7.	CSI Bridge	Bridge Analysis and Design Software
8.	Sofistik Bridge Modeler	Bridge Analysis and Design Software
9.	Plaxis 3D	Geotechnical Design, Tunnel Analysis and Design.
10.	SLOPE/W	Slope Stability Analysis
11.	Ansys	Multiphysics Simulation
12.	Abaqus	Multiphysics Simulation
13.	HEC-RAS	Hydraulic Modeling
14.	Mike 21	Hydraulic Modeling
15.	Microsoft Package 2016	Documentation Software
16.	ArcGIS	GIS Modelling
17.	Personal Computer	Design & Analysis
18.	Laptop	Presentation
19.	Projector	Presentation
20.	Workstation	Furniture
21.	Ferro Scanner	Rebar Checking Machine
22.	Total Station	Site Survey
23.	Autodesk Revit	Building Information Modeling.
24.	DJI Phantom 4 RTK Drone	RTK Drone Survey

Technology Development



Our research is focused on establishing a platform-based infrastructure for making engineering designs, on optimum design technology based on CAE*, and technologies based on smart construction engineering as in order to further international growth and secure future technologies which will lead the next generation with high added values.

*CAE; Computer-Aided Engineering

R&D Center



Our Research & Development Center, established in 2019, conducts research and development focusing on construction engineering, innovation in construction technology and ways to enhance technical.

The center applies next-generation technologies such as BIM*, CAE, Big Data, etc. to digitize the overall design process,

*BIM: Building Information System

World Class R&D

We are building a design engineering platform and developing application programs to focus on securing the Fourth Industrial Revolution technology that we will become a global engineering company.

Smart business system



Process Management



CFD Simulation

BIM Design



Applying and utilizing BIM from the design stage to improve design quality and develop designs using smart construction and BIM-based Asset Management System



Value Management



DBCL provides customized design and top-quality construction management services with minimal impact on the environment. We strictly comply with strict government regulations on safety and health and conduct fair and healthy corporate ethics.

